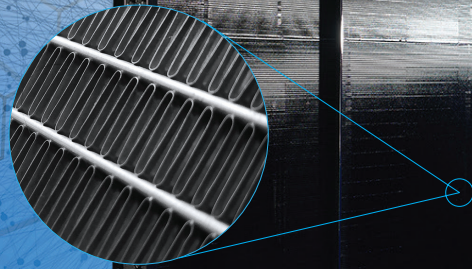


# ElectroFin<sup>®</sup> heat transfer coatings

## EFIN<sup>SM</sup> Pro Shield<sup>TM</sup> Program – Ultimate Coating Protection with the Required Warranty

The EFIN<sup>SM</sup> Pro Shield<sup>TM</sup> Program is a multi-layer coating protection program for Round Tube Plate Fin (RTPF) and Microchannel Heat Exchangers, where the customer chooses the level of warranty protection desired.



**EFIN<sup>SM</sup> PRO SHIELD<sup>TM</sup> 10:**  
TCP\*\* + ElectroFin<sup>®</sup> E-coat +  
Insitu<sup>®</sup> Topcoat:

**10 Year Triple Layer Coating Protection**

\*\*TCP applied when applicable

- 10 year warranty
- TCP passes 336 hours ASTM B117 Salt Spray
  - TCP passes 2,400 hours ASTM G85-A3
- ElectroFin<sup>®</sup> E-coat exceeds 15,000 hours ASTM B117 Salt Spray
- ElectroFin<sup>®</sup> E-coat passes 3,000 hours ASTM G85-A3
- Insitu<sup>®</sup> Topcoat exceeds 2,000 hours ASTM B117 Salt Spray
- Insitu<sup>®</sup> passes 500 hours minimum UV Resistance per ASTM D4587



**EFIN<sup>SM</sup> PRO SHIELD<sup>TM</sup> 7:**  
ElectroFin<sup>®</sup> E-coat + Insitu<sup>®</sup> Topcoat:

**7 Year Double Layer Coating Protection**

- 7 year warranty
- ElectroFin<sup>®</sup> E-coat Exceeds 15,000 hours ASTM B117 Salt Spray
- Insitu<sup>®</sup> Topcoat exceeds 2,000 hours ASTM B117 Salt Spray
- 500 hours minimum UV Resistance per ASTM D4587



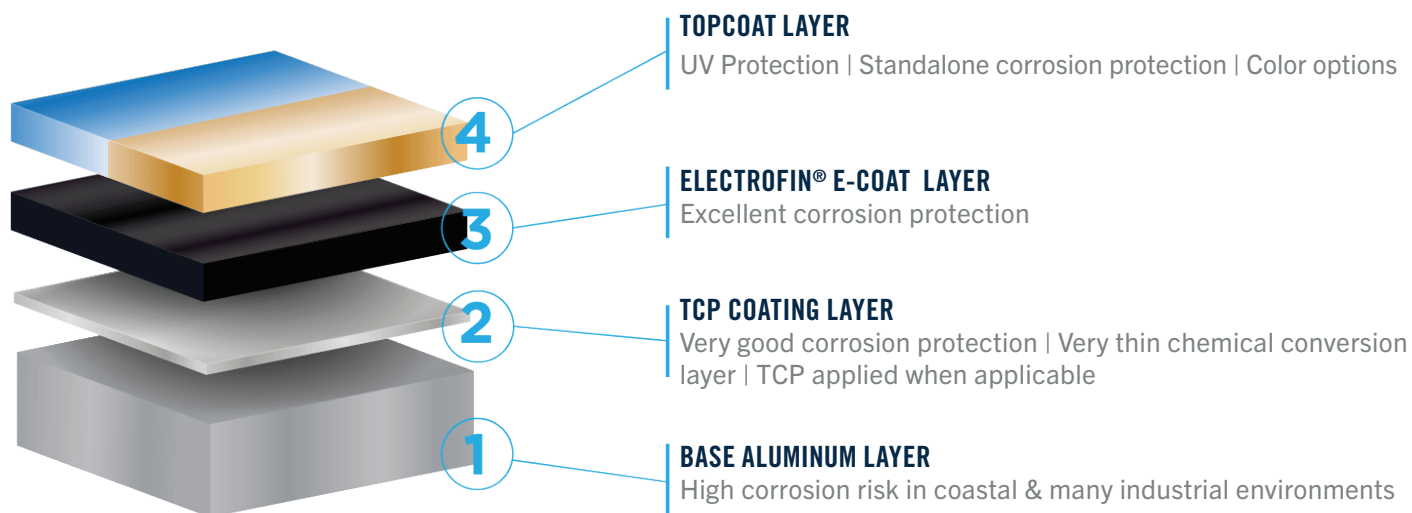
**EFIN<sup>SM</sup> PRO SHIELD<sup>TM</sup> 5:**  
ElectroFin<sup>®</sup> E-coat:

**5 Year Single Layer Coating Protection**

- 5 year warranty
- Exceeds 15,000 hours ASTM B117 Salt Spray
  - Passes 3,000 hours ASTM G85-A3
  - .5-1.2 mils Dry Film Thickness

The Best Total Corrosion Protection For Commercial HVAC Rooftops & Chillers  
**SPECIFY ELECTROFIN<sup>®</sup> E-COAT & INSITU<sup>®</sup> SPRAY SPRAY COAT**

## CROSS SECTION SHOWING LAYERS OF PROTECTION



## ELECTROFIN® E-COAT TECHNOLOGY

Our unique process provides an electro-deposition coating that involves epoxy paint particles evenly suspended in deionized water. When electrically charged, the paint particles migrate to and bond with aluminum, copper, and other conductive metal surfaces that form the heat exchanger coils. Resin and pigment migrate to the part, and an organic uniform film is irreversibly deposited.

This unique phenomenon is particularly important for tiny cavities where fin and tube joints, high fin densities, and enhanced fins are present. The charged molecules are drawn to the metal and form an even, continuous film over the entire surface. This coating process creates a smooth, consistent, and flexible coating that penetrates deep into all coil cavities and covers the entire coil assembly, including the fin edges.

### MODINE MANUFACTURING COMPANY Performance Technologies – Coatings

**Louisville**  
1423 West Ormsby Avenue  
Louisville, KY 40210  
Telephone: 903-253-3238

**Jacksonville**  
224 Talley Nichols Drive  
Jacksonville, TX 75766  
Toll-Free: 877.589.0009  
Telephone: 903.589.0009

**Italy**  
Via Pinzano, 2  
Zona Industriale Ponterosso  
I-33078 San Vito Al Tagliamento (PN)

**Mexico**  
Lib. Oscar Flores Tapia #1755 – 4  
Parque Ind. Amistad Aeropuerto Seccion II  
Ramos Arizpe, Coahuila, Mexico, 25900